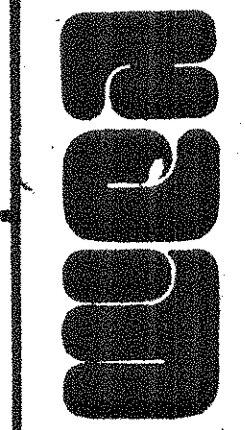




NO.	DESCRIPTION	DATE
1	ISSUED FOR PERMIT	10/1/2020
2	REVISION	
3	REVISION	
4	REVISION	
5	REVISION	
6	REVISION	
7	REVISION	
8	REVISION	
9	REVISION	
10	REVISION	

**GENESIS CENTER**  
ADAMS, BROADWAY, AND FIFTH AVENUE  
CITY OF GARY,  
RICHARD G. HATCHER,  
MAYOR

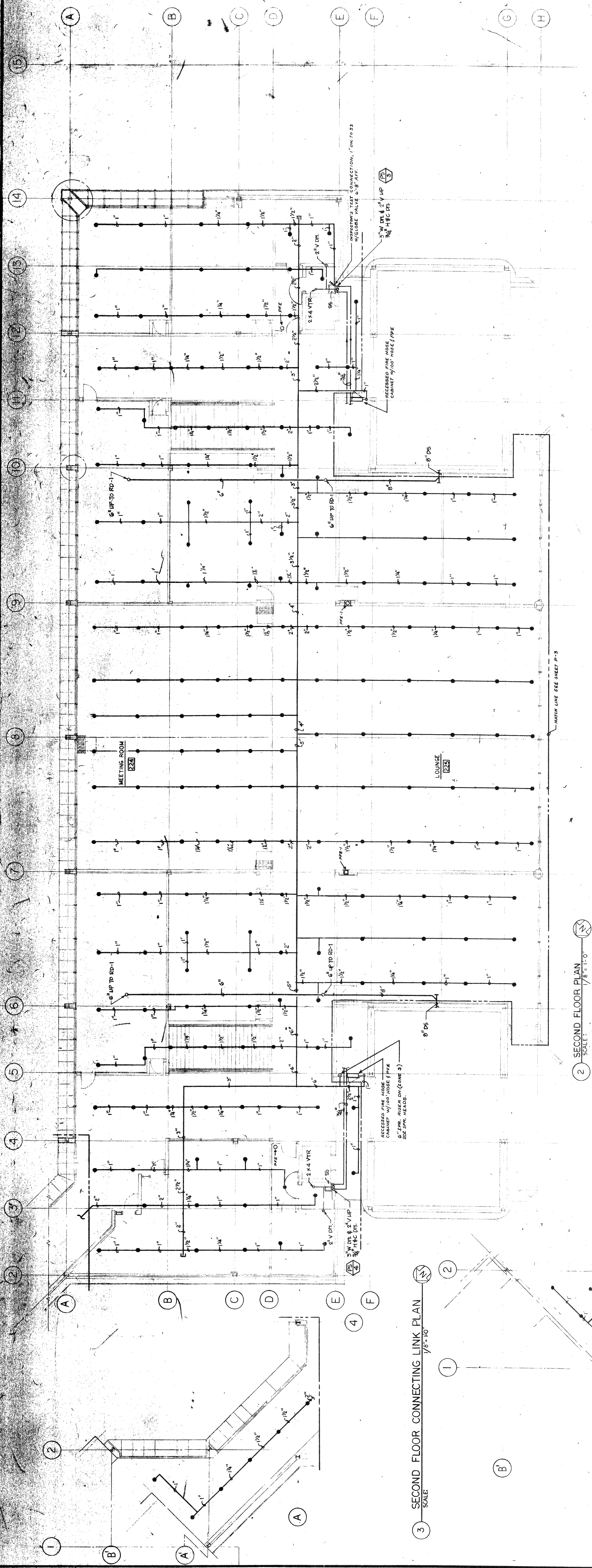
WALLACE, MIDAL & DRICKER  
CONSULTING ELECTRICAL ENGINEERS  
444 N. O'HARA  
CHICAGO, ILL. 60610



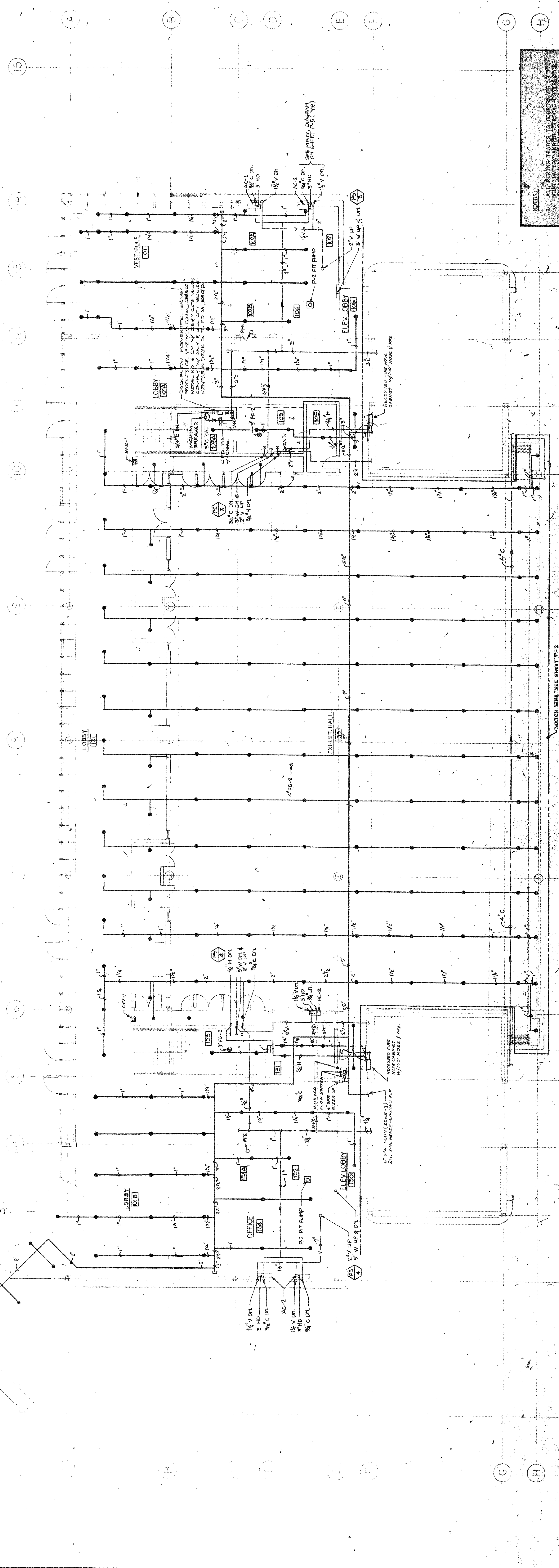
DATE	10/1/2020
APPROVED	LG
CHECKED	PS/RS
DRAWN	PS/RS

GROUND FLOOR & SECOND FLOOR PLAN	EXHIBIT HALL
----------------------------------	--------------

NOTES:  
1. ALL PIPING TRADE TO COORDINATE WITH MECHANICAL AND ELECTRICAL CONTRACTS.  
2. REFER TO MECHANICAL AND ELECTRICAL CONTRACTS FOR SCHEDULES AND MATERIALS.  
3. REFER TO EXHIBIT HALL FOR COORDINATE WITH MECHANICAL AND ELECTRICAL CONTRACTS.  
4. REFER TO EXHIBIT HALL FOR COORDINATE WITH MECHANICAL AND ELECTRICAL CONTRACTS.  
5. REFER TO EXHIBIT HALL FOR COORDINATE WITH MECHANICAL AND ELECTRICAL CONTRACTS.



2 SECOND FLOOR PLAN  
SCALE: 1/8" = 1'-0"



1 GROUND FLOOR PLAN  
SCALE: 1/8" = 1'-0"